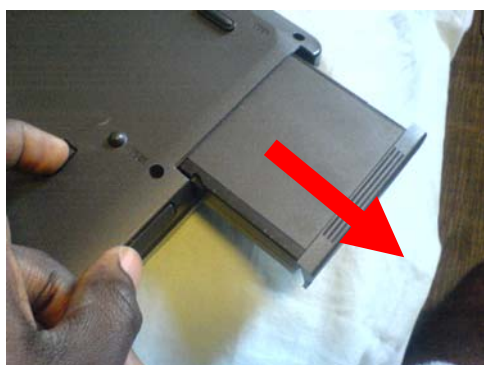


Upgrading the Fujitsu Siemens Amilo V2010 laptop

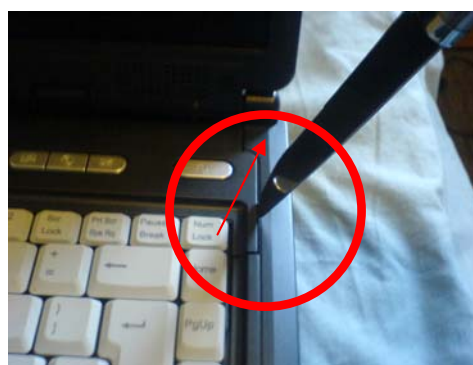
Memory Spec: Maximum of 1 Gbyte DDR333 SO DIMM (PC2700) or DDR266 SO DIMM (PC2100)
2 slots for 128, 256 or 512 Mbyte modules
(Taken from User Manual)

Health and safety:

1. Shutdown the laptop, turn off the main source on the wall, unplug and disconnect the power supply from the laptop.
2. Discharge yourself by touching the unpainted part of a PC or a radiator.
3. Remove the battery from the laptop. (Shift the battery lock and pull battery pack out.)



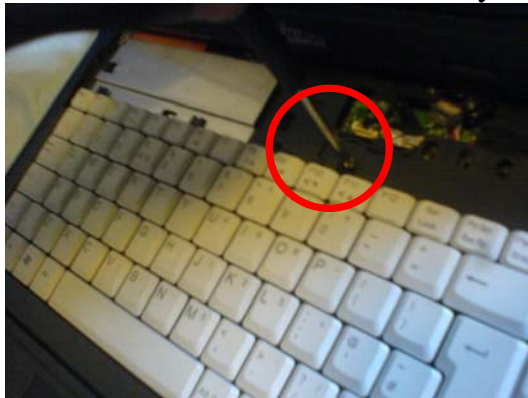
4. Remove the control Panel (use a razor or a flat butter knife) push the knife downward gentle and tilt it about 30° outward to release clips and left panel. Repeat the process on the other side till the entire panel is freely removed



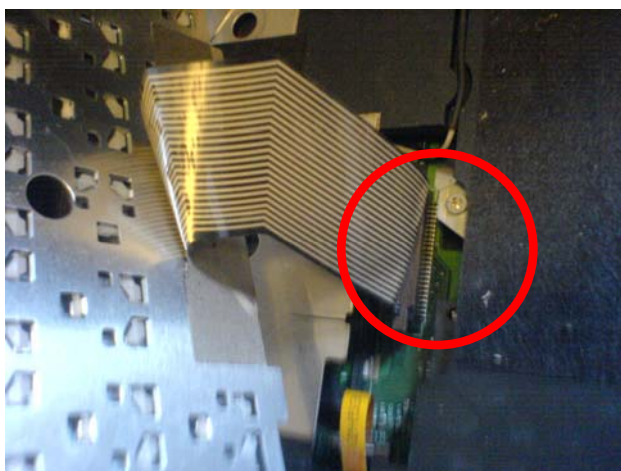
5. Remove the panel to expose the single screw that secures the keyboard.



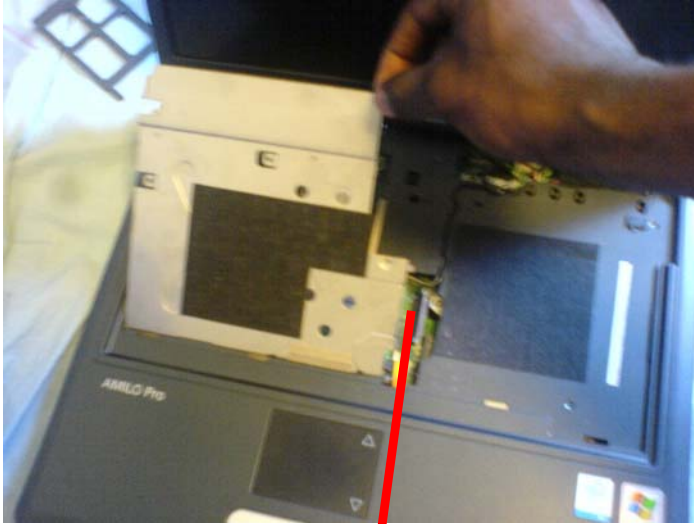
6. Undo the screw to free the keyboard and lift the Keyboard gently



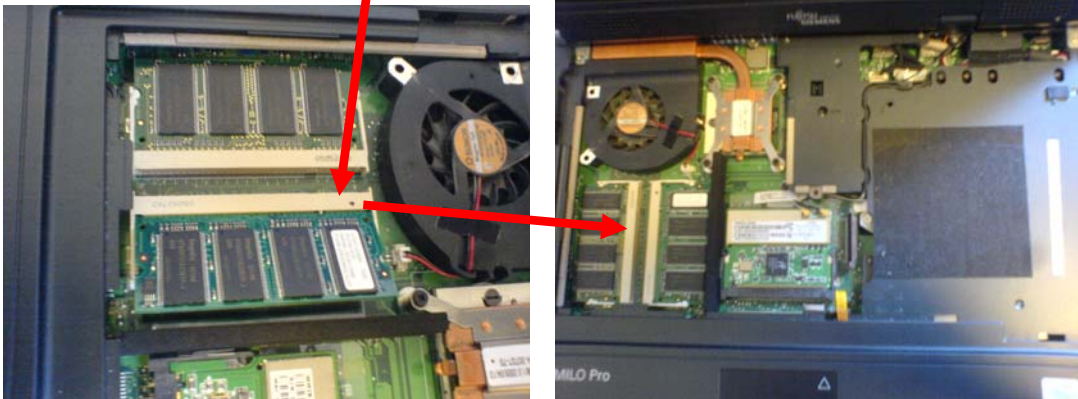
7. Undo the clip that holds the keyboard connector Ribbon in place this would completely free the keyboard. Remove the Keyboard. To unveil a metal plate



- Undo the screw that holds the metal plate down and remove the plate. This unveils the memory.

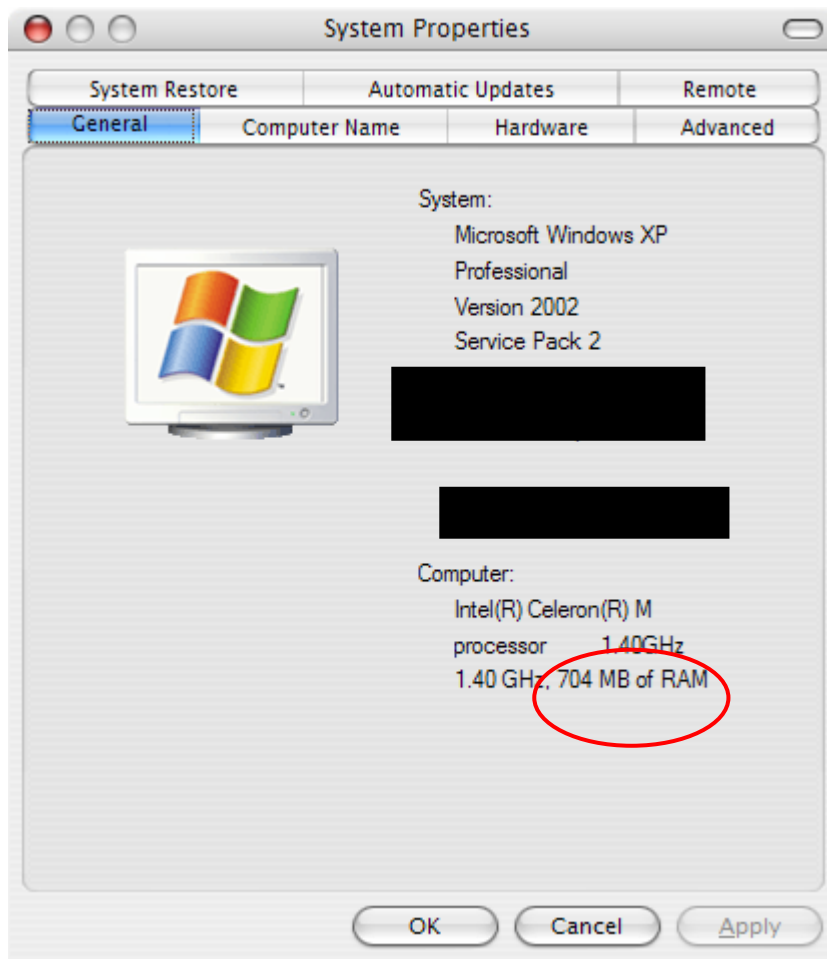


- Install the memory and close everything back up.



- replace the battery and power connector if necessary

11. Check “System” for the new RAM capacity: START, CONTROL PANEL, SYSTEM and General Tab.



*Published By Kwadwo Simpeh
Queen Mary University of London
May 2006*